

# Deild Stuttur



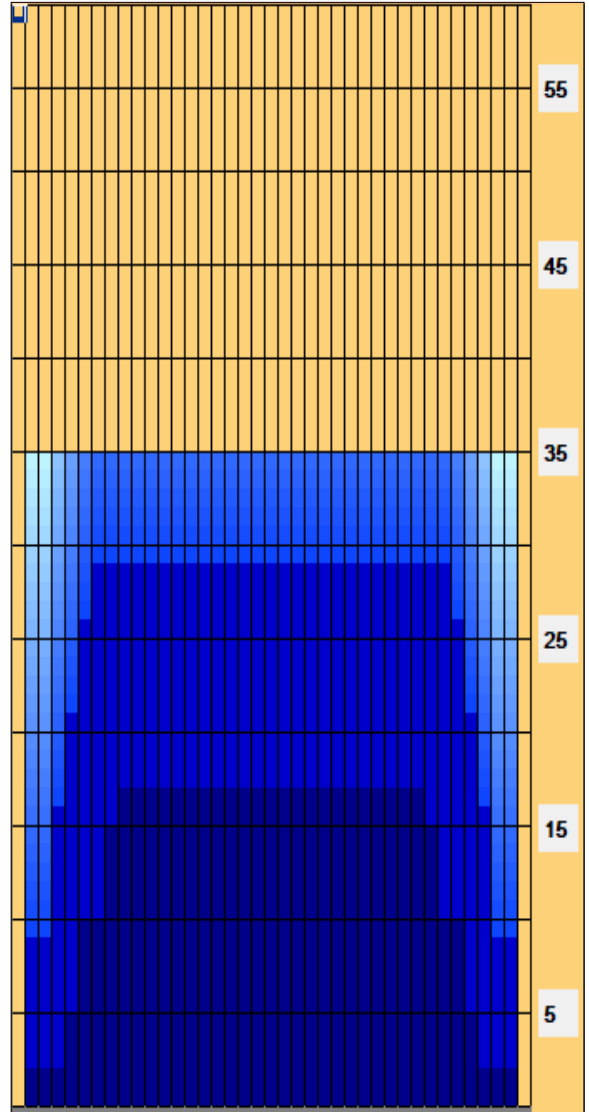
**Oil Pattern Distance:** 35 Feet      **Reverse Brush Drop:** 29 Feet      **Oil Per Board:** 50 uL  
**Forward Oil Total:** 11.8 mL      **Reverse Oil Total:** 14.15 mL      **Volume Oil Total:** 25.95 mL  
**Forward Boards Crossed:** 236 Boards      **Reverse Boards Crossed:** 283 Boards      **Total Boards Crossed:** 519 Boards

	Start	Stop	Loads	Speed	Crossed	Start	End	Feet	T.Oil
1	2L	2R	2	18	74	0.0	2.5	2.5	3700
2	5L	5R	1	18	31	2.5	5.0	2.5	1550
3	6L	6R	2	18	58	5.0	10.1	5.1	2900
4	8L	8R	2	18	50	10.1	15.2	5.1	2500
5	9L	9R	1	18	23	15.2	17.7	2.5	1150
6	2L	2R	0	22	0	17.7	31.0	13.3	0
7	2L	2R	0	22	0	31.0	35.0	4.0	0

	Start	Stop	Loads	Speed	Crossed	Start	End	Feet	T.Oil
1	2L	2R	0	30	0	35.0	29.0	-6.0	0
2	7L	7R	1	18	27	29.0	26.5	-2.5	1350
3	6L	6R	2	18	58	26.5	21.4	-5.1	2900
4	5L	5R	2	18	62	21.4	16.3	-5.1	3100
5	4L	4R	3	18	99	16.3	8.7	-7.6	4950
6	2L	2R	1	14	37	8.7	6.8	-1.9	1850
7	2L	2R	0	14	0	6.8	0.0	-6.8	0

Conditioner:  
 Type In or Select One  
  
 TransferType:  
 Type In or Select One

- Forward
- Reverse
- Combined
- Buff



Item	3L-7L:18L-18R	8L-12L:18L-18R	13L-17L:18L-18R	18L-18R:17R-13R	18L-18R:12R-8R	18L-18R:7R-3R
Description	Outside Track:Middle	Middle Track:Middle	Inside Track:Middle	Middle: Inside Track	Middle:Middle Track	Middle:Outside Track
Track Zone Ratio	1.89	1.01	1	1	1.01	1.89

